



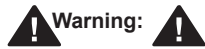
Read this manual carefully before installing, operating, servicing or repairing.

Working environment:

1. Using these tools in any potentially explosive environment is strictly prohibited.
2. It is always recommended that these types of tools must be operated when standing on a solid or firm location.
3. Always use these tools in a well ventilated area.
4. Slipping, stumbling and falling are the major causes of potential serious injury, therefore, a clean and clutter free surface in the working area before operating the tools is strongly recommended.

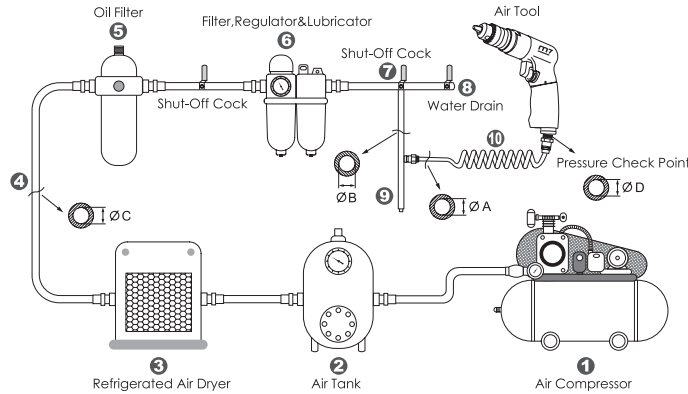
Air supply and connection requirements:

1. The maximum recommended air pressure during operation must not exceed 90 psi (6.3bar). Higher air pressure may create unsafe operating conditions for the tool and the user.
2. The compressed air should be cooled and have a water filter installed at the outlet end of the compressor. Even with a water filter installed, some water may still condense in the piping or hose and will enter the tool mechanism causing premature damage to the tool. Therefore, it is recommended to install an air filter-lubricator device somewhere between the tool and the compressor.
3. Always use an air compressor of the proper capacity to operate each tool.
4. Clean the hose with a blast of compressed air before connecting the hose to the air tool. This will prevent both moisture and dust inside the hose from entering the tool and causing possible rust or malfunction.



1. This tool should only be used as a hand operated tool. It is powered by compressed air and is not insulated against electric shock.
2. This tool is specially designed for drilling holes. Any application or use of this tool other than what it is designed for is strictly prohibited.
3. High sound levels may cause hearing damage. Always wear hearing protection when operating this tool.
4. User must wear proper clothing. Loose clothing, long hair, stings, straps, belts and jewelry should not be worn when operating this tool.
5. Make certain to stand on a solid or firm location and keep body in well-balanced position while operating this tool.
6. The reaction force created during operation can be reduced efficiently by means of attaching an extra handle onto this tool. Which measure can minimize the potential hazard caused by the reaction force.
7. Make sure that the drill bit is correctly mounted and tightened before use.
8. Ensure that the chuck key is removed from the tool before starting.
9. Ensure that the work piece is supported or fixed properly before operating.
10. Do not apply too much force on the tool because it may create a hazard at the moment when the drill bit breaks through the workpiece.
11. Note that high reaction torque may develop due to drill bit stalling. This may happen when drilling into the material or when the drill bit breaks through the material.
12. Beware of unexpected movement during operation, such as drill bit failure, which may create a hazards condition and cause injuries.
13. To prevent an accidental starting hazard, always rest the idle drill in a stable position.
14. Release the throttle trigger to avoid danger if there is a failure of energy supply and when connecting or disconnecting the air hose.
15. Beware if the compressed air hose breaks unexpectedly, or is being connected or disconnected improperly. This whipping action may cause injury.
16. Always turn off the air supply and disconnect the air hose before replacing drill bit or making adjustments on this tool.
17. Prolonged use will cause user fatigue. Periodic breaks are recommended for user safety.

Working environment:



Piping diameters and length requirement:

- ★ The diameter ΦA required for the inlet pipe (10) is recommended on the specification table.
- ★ The diameter ΦB required for the branch pipe (from 7 to 9) should be 2 times as large as ΦA . $\Phi B = 2 \times \Phi A$
- ★ The diameter ΦC required for the primary air supply (from 1 to 8) should be 3 times as large as ΦA . $\Phi C = 3 \times \Phi A$
- ★ The length for the inlet pipe (10) should be less than 15 feet (4.5m).

18. It is recommended to stop operating the tool whenever the user experiences discomfort, tingling or pain during use.
19. Make sure there is no gas or combustible material stored near the tool when servicing, changing insert tools, or storage.
20. Avoid storing this tool where it is subject to high humidity.

Maintenance:

1. Before connecting the air hose to this tool or after operating, apply 4 or 5 drops of pneumatic oil into the air inlet and run it for several seconds, referring this operation to the attached picture.
2. Maintain this tool regularly by performing the same oiling application every 3 to 4 hours of operation.
3. Do not lubricate tools with flammable or volatile liquids. Use only the lubricant recommended by Mighty-Seven or authorized dealers. Any other lubricant will lead to reduce performance of the tool and permanent damage. Whenever any unauthorized lubricant is used by accident, flush it immediately with recommended pneumatic oil.
4. Follow all the recycling laws of waste disposal once this tool is no longer usable.



CE DECLARATION OF CONFORMITY

Original Language

Serial Number: Please refer to the tool

Air Reversible Drill

Item No.: QE-1143

We declare under our own responsibility that the above machinery fulfils all the relevant provisions of (MD) Machinery Directive 2006/42/EC and its amendment and is manufactured and tested according to the following standards:

EN ISO 11148-3 / EN ISO 15744 / EN ISO 28927-5

Declared in: Taichung, Taiwan
Dated: 2026/01/01

Signature

Jay Lin
Declared by: QA Manager

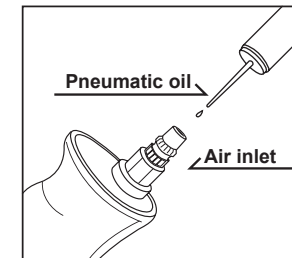
Manufacturer:

Mighty Seven International Co., Ltd.
No. 70-25, Ching Qunag Rd., Wu-Jih Shiang,
Taichung Hsien, 41466 Taiwan
www.mighty-seven.com

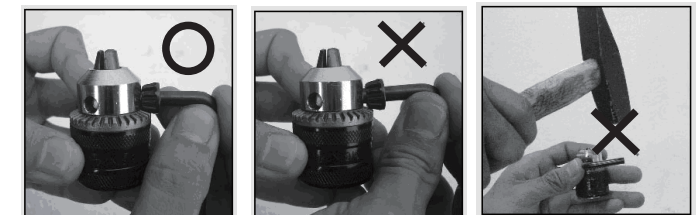
Authorized contact, to compile the technical files :

King Tony Europe

3 Rue des imprimeurs ZI République Nord 1,
86000 POITIERS FRANCE
TEL : (+33) 5-49-30-30-90
E-MAIL : christian.aubineau@kingtony.eu

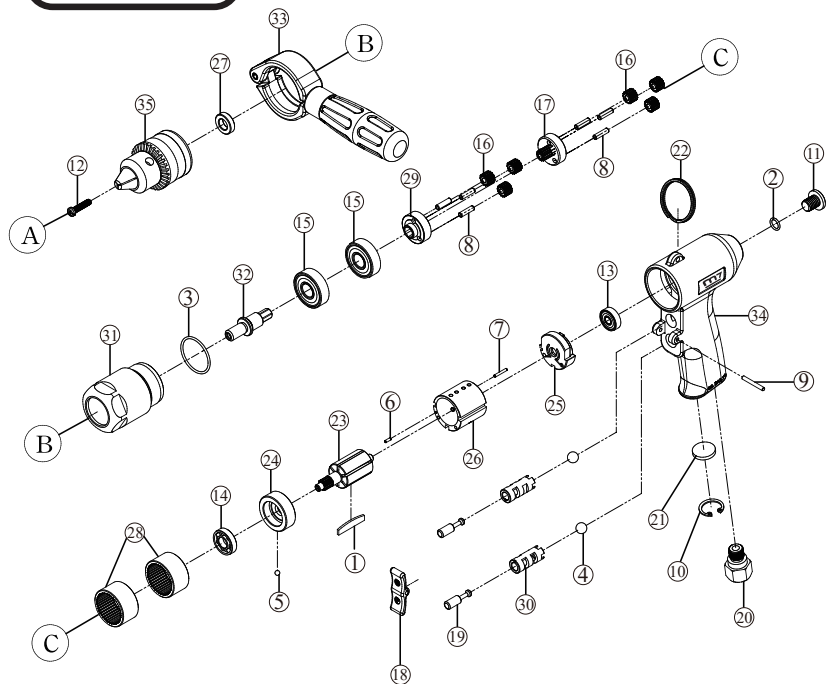


Regular maintenance





Air Reversible Drill
Item No : QE-1143



Part List Item No : QE-1143



NO.	PART NO	DESCRIPTION	Q'TY
1	QE-1143T01	ROTOR BLADE (6 PCS)	1 SET
2	QE-1143P02	O-RING (P8x1.5)	1
3	QE-1143P03	O-RING (AS-568-025)	1
4	QE-1143T04	PLASTIC BALL(Ø9) (2 PCS)	1 SET
5	QE-1143P05	STEEL BALL(Ø4mm)	1
6	QE-1143P06	PIN (Ø2x6)	1
7	QE-1143P07	PIN (Ø2x14)	1
8	QE-1143T08	PIN (Ø4x15) (6 PCS)	1 SET
9	QE-1143P09	PIN (Ø3x24)	1
10	QE-1143P10	STOPPING WHEEL	1
11	QE-1143P11	SCREW	1
12	QE-1143P12	SCREW	1
13	QE-1143P13	BALL BEARING (626-2Z)	1
14	QE-1143P14	BALL BEARING (R6)	1
15	QE-1143T15	BALL BEARING (6201-2Z) (2 PCS)	1 SET
16	QE-1143T16	PLANNET GEAR (6 PCS)	1 SET
17	QE-1143P17	GEAR	1

18	QE-1143P18	SWITCH LEVER	1
19	QE-1143T19	ROD (2 PCS)	1 SET
20	QE-1143P20	AIR INLET (PT)	1
21	QE-1143P21	MUFFLER	1
22	QE-1143P22	HOOK	1
23	QE-1143P23	ROTOR	1
24	QE-1143P24	FRONT PLATE	1
25	QE-1143P25	REAR PLATE	1
26	QE-1143P26	CYLINDER	1
27	QE-1143P27	BOLT (WASHER)	1
28	QE-1143T28	GEAR RING (2 PCS)	1 SET
29	QE-1143P29	GEAR SEAT	1
30	QE-1143T30	BUSHING (2PCS)	1 SET
31	QE-1143P31	BUSHING	1
32	QE-1143P32	DRIVING ROD	1
33	QE-1143P33	AUXILIARY GEAR	1
34	QE-1143P34	HANDLE	1
35	QE-1143P35	CHUCK 1/2"	1

Item No.	Chuck Size	Free Speed	Overall Length	Net Weight	Air Inlet	Sound Pressure	Air Consumption
	inch / mm	R.P.M	inch / mm	LBS / kg	inch	dBA	CFM
Illustrator							
QE-1143	1/2" (13)	700	8.07"(205)	3.28(1.49)	1/4	82	7.5

Uncertainty K=0.5a if a ≤ 5 m/s² or K=0.4a if a > 5 m/s²

Warranty Card

Manufacturer's limited warranty

Mighty Seven International CO., LTD. offers limited warranty to the products manufactured by **Mighty Seven** and sold by its worldwide authorized dealers. The limited warranty only applies to products that are defective in material and workmanship and does not apply to products which have been abused, misused, modified, or repaired by someone other than **Mighty Seven** or its authorized service representatives. If there is a defective product of **Mighty Seven**, please send it prepaid to the dealer where it was purchased from along with address and contact information. Repairs or replacements are warranted as described above; otherwise, the service of repairs or replacements will be charged.

Please Keep This card For Warranty

Date of Purchase :	Model No. :
Warranty Expiration Date :	Serial No. :
Distributor Stamp	

For Distributor



Warranty Card

Date of Purchase :	Model No. :
Warranty Expiration Date :	Serial No. :
Name :	
Company Name :	
Address :	
Tel. :	Fax. :
E-mail :	
Type of Business :	
<input type="checkbox"/> Agriculture	<input type="checkbox"/> Paint & Body Repair
<input type="checkbox"/> General Auto Repair	<input type="checkbox"/> Public Work/Gov. Utilities
<input type="checkbox"/> Tire	<input type="checkbox"/> Factory
<input type="checkbox"/> Truck Maintenance/Repair	<input type="checkbox"/> Home Use
<input type="checkbox"/> Car Maker	<input type="checkbox"/> Other _____
Specification of compressor used :	
Horsepower :	Tank Size (liter/gal) :
<input type="checkbox"/> 5 <input type="checkbox"/> 7.5 <input type="checkbox"/> 10 <input type="checkbox"/> 15+	<input type="checkbox"/> 75.7(20) <input type="checkbox"/> 227.1(60) <input type="checkbox"/> 302.8(80) <input type="checkbox"/> 454.2(120)
<input type="checkbox"/> other _____	<input type="checkbox"/> other _____