



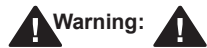
**Read this manual carefully before installing, operating, servicing or repairing.**

**Working environment:**

- Using these tools in any potentially explosive environment is strictly prohibited.
- It is always recommended that these types of tools must be operated when standing on a solid or firm location.
- Always use these tools in a well ventilated area.
- Slipping, stumbling and falling are the major causes of potential serious injury, therefore, a clean and clutter free surface in the working area before operating the tools is strongly recommended.

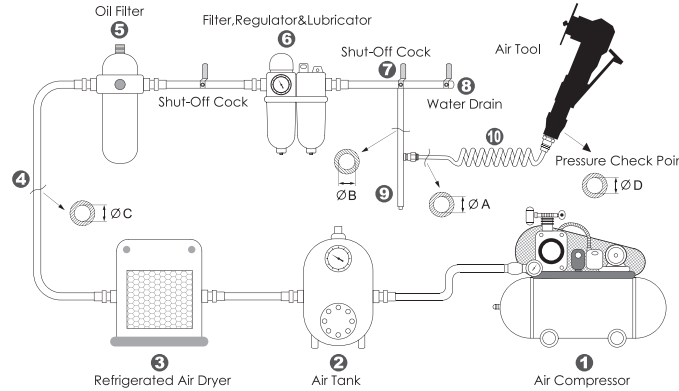
**Air supply and connection requirements:**

- The maximum recommended air pressure during operation must not exceed 90 psi (6.3bar). Higher air pressure may create unsafe operating conditions for the tool and the user.
- The compressed air should be cooled and have a water filter installed at the outlet end of the compressor. Even with a water filter installed, some water may still condense in the piping or hose and will enter the tool mechanism causing premature damage to the tool. Therefore, it is recommended to install an air filter-lubricator device somewhere between the tool and the compressor.
- Always use an air compressor of the proper capacity to operate each tool.
- Clean the hose with a blast of compressed air before connecting the hose to the air tool. This will prevent both moisture and dust inside the hose from entering the tool and causing possible rust or malfunction.



- Warning:**
- This tool should only be used as a hand operated tool. It is powered by compressed air and is not insulated against electric shock.
  - This tool is specially designed for grinding sharp edges, burrs, or a surface which needs to be cleaned or smoothed. Any application or use of this tool other than what it is designed for is strictly prohibited.
  - Use only pneumatic impact sockets and accessories on this tool. Never use hand sockets or accessories.
  - High sound levels may cause hearing damage. Always wear hearing protection when operating this tool.
  - Wearing eye/face protection can reduce the danger of high-speed materials being emitted from the tool.
  - User must wear proper clothing. Loose clothing, long hair, stings, straps, belts and jewelry should not be worn when operating this tool.
  - Before using these tools, make sure that all couplings and plugs are securely mounted. Air hoses which are under pressure will cause a whipping action when disconnecting, this can lead to serious injury!
  - Make certain to stand on a solid or firm location and keep body in well-balance position while operating this tool.
  - Test run the tool to confirm the rotation direction before practical use. This will reduce the potential hazard due to unexpected rotating direction.
  - In case of tool insert failure, always keep hands away from rotating socket to reduce the risk of being injured, especially when working in confined spaces.
  - Always turn off the air supply and disconnect the air hose before changing socket or making adjustments on the tool.
  - Release the throttle trigger to avoid danger if there is a failure of energy supply and when connecting or disconnecting the air hose.
  - prolonged use will cause user fatigue. Periodic breaks are recommended for user safety.
  - It is recommended to stop operating the tool whenever the user experiences discomfort, tingling or pain during use.
  - Beware if the compressed air hose breaks unexpectedly, or is being connected or disconnected improperly. This whipping action may cause injury.
  - Always use caution when operating this tool to prevent injury.
  - Avoid storing this tool where it is subject to high humidity.

**Working environment:**

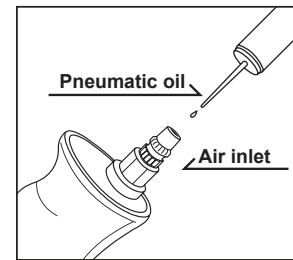


**Piping diameters and length requirement:**

- ★The diameter  $\Phi A$  required for the inlet pipe (10) is recommended on the specification table.
- ★The diameter  $\Phi B$  required for the branch pipe (from 7 to 9) should be 2 times as large as  $\Phi A$ .  $\Phi B = 2 \times \Phi A$
- ★The diameter  $\Phi C$  required for the primary air supply (from 1 to 8) should be 3 times as large as  $\Phi A$ .  $\Phi C = 3 \times \Phi A$
- ★The length for the inlet pipe (10) should be less than 15 feet (4.5m).

**Maintenance:**

- Before connecting the air hose to this tool or after operating, apply 4 or 5 drops of pneumatic oil into the air inlet and run it for several seconds, referring this operation to the attached picture.
- Maintain this tool regularly by performing the same oiling application every 3 to 4 hours of operation.
- Do not lubricate tools with flammable or volatile liquids. Use only the lubricant recommended by Mighty-Seven or authorized dealers. Any other lubricant will lead to reduce performance of the tool and permanent damage. Whenever any unauthorized lubricant is used by accident, flush it immediately with recommended pneumatic oil.
- Follow all the recycling laws of waste disposal once this tool is no longer usable.



**Regular maintenance**



**CE DECLARATION OF CONFORMITY**

Original Language  
Serial Number: Please refer to the tool  
Mini Air Chamfering Tools  
Item No.: QC-512  
6.3 bar (90. psi)

We declare under our own responsibility that the above machinery fulfils all the relevant provisions of (MD) Machinery Directive 2006/42/EC and its amendment and is manufactured and tested according to the following standards:  
EN ISO 11148-9 / EN ISO 15744 / EN ISO 28927-12

Declared in: Taichung, Taiwan  
Dated: 2020/01/01

Signature

Jay Lin  
Declared by: QA Manager

**Manufacturer:**

**Mighty Seven International Co., Ltd.**  
No. 70-25, Ching Qunag Rd., Wu-Jih Shiang,  
Taichung Hsien, 41466 Taiwan  
www.mighty-seven.com

Authorized contact, to compile the technical files :

**King Tony Europe**

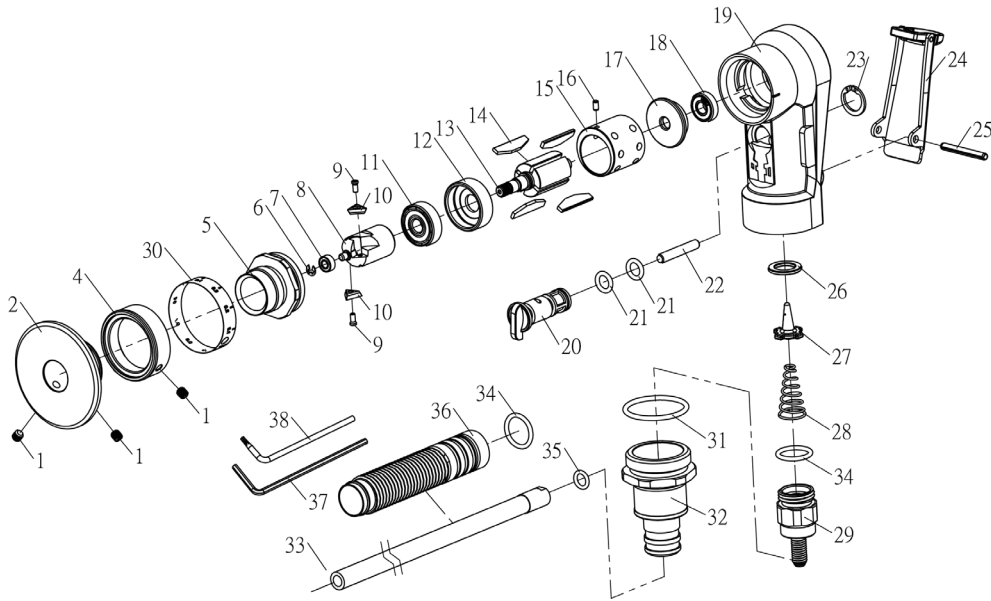
3 Rue des imprimeurs ZI République Nord 1.  
86000 POITIERS FRANCE  
TEL : (+33) 5-49-30-30-90  
E-MAIL : christian.aubineau@kingtony.eu





# Part List

Item No : QC-512



NO.	INDEX NO.	DESCRIPTION	Q'TY
1	QC-512T01	Set Screw (M4x4) (2 pcs)	1 SET
2	QC-512P02	Guide Plate	1
3	QC-512P03	Set Screw (M3x4)	1
4	QC-512P04	Scale Ring	1
5	QC-512P05	Lock Screw	1
6	QC-512P06	E-Ring	1
7	QC-512P07	Ball Bearing (683zz)	1
8	QC-512P08	Shank	1
9	QC-512T09	Indexable Insert Set Screw (2 pcs)	1 SET
10	QC-512T10	Indexable Insert (2 pcs)	1 SET
11	QC-512P11	Ball Bearing (626zz)	1
12	QC-512P12	Front End Plate	1
13	QC-512P13	Rotor	1
14	QC-512T14	Rotor Blade (4 pcs)	1 SET
15	QC-512P15	Cylinder	1
16	QC-512P16	Spring Pin (Ø2x4)	1
17	QC-512P17	Rear End Plate	1
18	QC-512P18	Ball Bearing (695zz)	1
19	QC-512P19	Housing	1
20	QC-512P20	Adjust Valve	1

NO.	INDEX NO.	DESCRIPTION	Q'TY
21	QC-512T21	O-Ring (ID6.07x1.78) (2 pcs)	1 SET
22	QC-512P22	Parallel Pin (Ø4x23.8)	1
23	QC-512P23	Retaining Ring	1
24	QC-512P24	Lever Ass'y	1
25	QC-512P25	Spring Pin (Ø3x25)	1
26	QC-512P26	Washer	1
27	QC-512P27	Valve	1
28	QC-512P28	Valve Spring	1
29	QC-512P29	Connection	1
30	QC-512P30	Label	1
31	QC-512P31	O-Ring (ID24.5x2)	1
32	QC-512P32	Hose Holder	1
33	QC-512P33	Air Hose Ass'y	1
34	QC-512T34	O-Ring (ID12.42x1.78) (2 pcs)	1 SET
35	QC-512P35	O-Ring (ID5.5x1.5)	1
36	QC-512P36	Exhaust Hose	1
37	QC-512P37	Hex. Wrench	1
38	QC-512P38	Spanner	1

Item No.	Free Speed	Avg. Air Consumption	Air Pressure	Overall Length	Motor	Net Weight	Air Hose	Sound Pressure
	R.P.M	CFM(l/min)	PSI(bar)	inch(mm)	hp	LBS(kg)	inch(mm)	dBA
Illustrator					hp			
QC-512	28000	2(57)	90(6.3)	4-17/8"(105)	0.4	1.1(0.5)	3/8"(10)	85

Uncertainty K=0.5a if a < 5 m/s<sup>2</sup> or K=0.4a if a > 5 m/s<sup>2</sup>

## Warranty Card

### Manufacturer's limited warranty

**Mighty Seven International CO., LTD.** offers limited warranty to the products manufactured by **Mighty Seven** and sold by its worldwide authorized dealers. The limited warranty only applies to products that are defective in material and workmanship and does not apply to products which have been abused, misused, modified, or repaired by someone other than **Mighty Seven** or its authorized service representatives. If there is a defective product of **Mighty Seven**, please send it prepaid to the dealer where it was purchased from along with address and contact information. Repairs or replacements are warranted as described above; otherwise, the service of repairs or replacements will be charged.

Please Keep This card For Warranty

Date of Purchase :	Model No. :
Warranty Expiration Date :	Serial No. :
<b>Distributor Stamp</b>	

For Distributor



## Warranty Card

Date of Purchase :	Model No. :
Warranty Expiration Date :	Serial No. :
Name :	
Company Name :	
Address :	
Tel. :	Fax. :
E-mail :	
<b>Type of Business :</b>	
<input type="checkbox"/> Agriculture	<input type="checkbox"/> Paint & Body Repair
<input type="checkbox"/> General Auto Repair	<input type="checkbox"/> Public Work/Gov. Utilities
<input type="checkbox"/> Tire	<input type="checkbox"/> Factory
<input type="checkbox"/> Truck Maintenance/Repair	<input type="checkbox"/> Home Use
<input type="checkbox"/> Car Maker	<input type="checkbox"/> Other _____
<b>Specification of compressor used :</b>	
Horsepower :	Tank Size (liter/gal) :
<input type="checkbox"/> 5 <input type="checkbox"/> 7.5 <input type="checkbox"/> 10 <input type="checkbox"/> 15+	<input type="checkbox"/> 75.7(20) <input type="checkbox"/> 227.1(60) <input type="checkbox"/> 302.8(80) <input type="checkbox"/> 454.2(120)
<input type="checkbox"/> other _____	<input type="checkbox"/> other _____